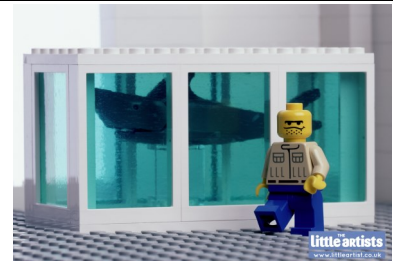
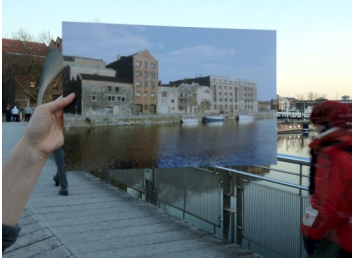


ARNOLFINI

WELCOME TO THE WEEKEND OF RETURNS

30TH AND 31ST MARCH 2013

This weekend, artists and performers will animate the exhibition **Version Control** through a series of playful encounters and reinterpretations. Families and young audiences are invited to revisit artworks and create unusual versions of the works on display.



WHAT'S ON:

The Secret Archive – Artist Andy Field has discovered a secret collection of Arnolfini artwork that is too delicate to be seen by adult eyes. We need the help of children to tell us what's in the room. All adults entering the secret archive must be blindfolded to avoid the risk of destroying this fragile collection. Children of Bristol it is your mission to tell the grown-ups what you discover!

WHERE: DARK STUDIO WHEN: 1PM-5PM (PLEASE BE AWARE THAT ONLY 2 FAMILIES AT A TIME MAY ENTER)

Spoken Monologue Karaoke- In the spirit of recreation and reinterpretation, we invite you to take part in our spoken monologue karaoke- no singing skills required! Come and tell us your favourite karaoke number and have the chance to perform your party piece to the crowd.

WHERE: LIGHT STUDIO WHEN: 4:15PM-5PM

Lego Arnolfini- Bring your Lego and creative skills to help us to create a miniature version of Arnolfini and its artworks. Check our Facebook and Twitter pages for details of our online competition to make Lego versions of contemporary artworks inspired by the work of 'The Little Artists'.

WHERE: LIGHT STUDIO WHEN: 1PM-4PM

Photo Matching- Take part in our photo matching game to pair up photos of past events and exhibitions with the spaces in Arnolfini. Submit your own photo matches of Arnolfini and Bristol harbourside on our Facebook page or tweet us @arnolfiniarts #WOReturns to join in the fun!

WHERE: GALLERY SPACES (PICK UP YOUR PHOTO SHEET FROM THE LIGHT STUDIO OR READING ROOM) WHEN:1PM-5PM

Semaphore Flash Mob- Inspired by the work of Amalia Pica and Search Party, come and be part of our semaphore sending flash mob. Collect the secret message and listen for the signal to start communicating in a completely different way!

WHERE: PICK UP THE MESSAGE FROM LIGHT STUDIO OR ONE OF OUR VOLUNTEERS WHEN: LISTEN FOR THE SECRET SIGNAL!

YA Postcard Showcase– Young Arnolfini (our young people's group) have created a fantastic range of postcards in response to the artworks in Version Control. There are 4 designs available which interpret Version Control from their individual points of view. Come and collect your free postcards, try out their activities and see the exhibition through their eyes!

WHERE: LIGHT STUDIO WHEN: 1PM-4PM

Family Film Screening- Join us for screenings of unusual interpretations of fairy tales and well known stories, suitable for all ages.

WHERE: AUDITORIUM WHEN: TALES OF THE NIGHT (13:30-14:50) THE FAIRY TALE FILMS-COLLECTION OF SHORTS (14:50-16:00)